



SECURE .

DIAGRAMMING

→ **IN THE ATlassian ECOSYSTEM**

EVERYONE, EVERYWHERE

NEEDS DIAGRAMS AT WORK

Here at draw.io, we love diagrams! And we know many of you love diagrams and use them at work each day. That's why we want to make it as easy as possible for everyone to create diagrams using a professional and secure diagramming tool.

Diagrams are used by everyone, in every department, to present complex information, quickly and clearly. It's only natural and logical that diagramming goes hand-in-hand with our need for professional and transparent content management, project development, business procedure and technical documentation in Confluence and Jira.



Human Resources

Diagrams in Confluence help to onboard new employees efficiently, provide an overview of the organizational structure, and document important business procedures.



Software developers and project managers

In the fast paced world of software development, it's helpful to create diagrams directly in Jira and Trello, keeping the information together with the related issues. Of course, these diagrams are also kept with their related documentation in Confluence.



Content managers and marketers

These teams are more often working with Confluence and need to collaborate on diagrams to engage and educate their customers and users.



Translators and documentation writers

Customers around the world need to know how to use your products and services. Diagrams can be developed and translated directly in Confluence along with any other technical documentation.



Managers

Business leaders often take advantage of visualizations to develop and refine their business plans and present a variety of business models and processes concisely and understandably.

A CONSISTENTLY POPULAR

DIAGRAMMING APP FOR EVERYONE

draw.io has been consistently one of the most popular and frequently installed apps on the Atlassian Marketplace. There are many aspects that make this a winning tool.

Affordable

With draw.io, everyone in your Confluence or Jira instance will be able to access a diagramming tool for a great price. Collaboration is smoother when everyone uses the same tools. It also means that you don't have to purchase expensive licenses for stand-alone software for each user who wants to diagram or purchase third-party subscriptions to unlock your tool's full functionality.

Customizable

You can easily customize the draw.io interface in Confluence Server and Confluence Cloud, giving your teams fast access to the shape libraries, styles, and plugins they use the most. Take a look at [last year's Summit presentation](#) to see how much faster diagramming is when everything you need for your corporate style is set by default.

Flexible

There are many [plugins](#) available to extend draw.io's functionality on Confluence Server – for example, to animate your diagrams or anonymize them before sending them to your external partners. On all compatible platforms, our app has been created to handle many different import and export formats and even has a reliable and robust mass Gliffy importer.

Responsive support

Our developers work quickly to resolve any issues, whether they are inquiries about how to use the tool, problems with the mass Gliffy importer or a bug in the software. You can also request and vote on new features on our [Trello roadmap boards](#).

Trustworthy

Your draw.io diagram data will never be stored behind a locked door, as is the case with many subscription-based diagramming tools. Since draw.io is open source, you will always have access to a tool where you can open, edit, and export your diagram data, even if your company switches to a different collaboration solution.

EXTRA FEATURES USING

DRAW.IO IN CONFLUENCE

draw.io is one of the most popular diagramming apps for Confluence, and it's easy to see why. There are so many additional features that are not available within stand-alone diagramming tools that make collaborating on diagrams much smoother.



Track diagram changes

Confluence's comprehensive **revision history** keeps track of every change made to your diagram and your page content. That way, you can restore older versions and use the version history for your audits.



Mass import

Quickly and easily **import all of the Gliffy diagrams** in your instance (or in a single space) to draw.io diagrams in just a few clicks. Don't worry - your Gliffy diagrams are still attached to their pages, and Confluence's revision history makes sure you won't lose any data.



Search the text in diagrams

The intranet-wide Confluence search function also looks at the text inside your draw.io diagrams. You'll find relevant diagrams along with page content when you search in Confluence.



Customize the draw.io user interface

Make it easier and faster for your employees to **diagram in line with your corporate style**. You can make custom libraries containing commonly used shapes, popular draw.io plugins, or even fonts, colors, and styles that match your company's look and feel available to all of your users by default. You can also add your own custom diagram templates, especially useful when you have a codebase you want to document as you develop each new release, or processes you need to tweak for a new team.

This feature will save your employees a lot of time and stress!

DRAW.IO KEEPS YOUR DATA SECURE AND PRIVATE

Unlike almost all other diagramming tools, draw.io only saves your data in your browser and the location where you have chosen to save your diagram.

Your diagram data is only stored on a Confluence or Jira server within your own infrastructure, or in Atlassian's Cloud if you are using Confluence Cloud, Jira Cloud or Trello. No data is ever stored on third-party systems – your data is both secure and private when you use the draw.io apps with Atlassian software. Using draw.io in your Atlassian tools can also help you to gain certification under the ISO 27000, 27001, and 27002 standards, the three worldwide standards that cover data protection.

Don't risk security breaches

When you store information outside of your architecture, on third-party servers or in remote cloud services, it adds another layer to your security management and raises the risk of security breaches. It is only logical that you want to keep your organization's architecture as simple and secure as possible. And that is easy with Atlassian tools and the draw.io app – all of your diagram data is stored within your secure environment.

Clear ownership of your diagrams

Many subscription diagramming services and third parties have low-priced tiers which permit *them* to use your diagrams as examples for their marketing materials. Our [EULA](#) is crystal clear about where and how you can use the diagrams you create with draw.io. Want to use a diagram for commercial purposes? No problem! There is no legal ambiguity in our EULA; with draw.io, you will always own your diagram creations completely. draw.io never stores your diagram data: In fact, we never see it. We have no access.

Are you diagramming illegally?

Your diagrams don't just contain confidential business information; they can also include personal information about real people. These could be organization charts, business process diagrams or flow charts where people are named or described, or other types of diagrams containing information that identifies individuals. Thanks to the GDPR, no matter where you are in the world, if you use any identifying information about a European citizen, you are legally required to obtain data processing agreements for all of the tools where you work with and store that data. The fines that may apply if you don't are severe (up to 4% of your revenue or 20 million euros).

Of course, when you use Confluence and Jira in Atlassian's Cloud, you will have already made this agreement with Atlassian. If you were to use a tool other than draw.io for diagramming, you would need to review their privacy policies carefully and enter into separate data processing agreements (DPA) with the data processors and cloud storage providers. With draw.io, that's not a problem. Your data stays on your computer, and either on your server or in Atlassian's Cloud. No contracts needed. If you are using another diagramming provider and haven't signed a DPA with them, you may be diagramming illegally.

draw.io takes diagram data security and privacy very seriously. We even publish a full and versioned set of policies, data processing agreements, EULAs, and answers to security and privacy questions in our [GitHub repository](#) for your reassurance.

WHEN AND

WHERE

ARE DIAGRAMS USEFUL?

Anyone who needs to present complex information clearly and succinctly needs to diagram. We are sure you have doodled a quick map for friends and families, outlined a paper or research topic in a mind map, or mocked up a website or poster.

And that's just diagramming privately! Let's have a look at some of the more common use cases both in and outside of organizations.

page 7

Collaborate securely

draw.io in Confluence

page 8

Document like a pro

draw.io for Jira

page 9

Collaborate securely on anything with anyone

draw.io in Trello

page 10

It's easy to switch to draw.io

Improve your data security

COLLABORATE SECURELY

DRAW.IO FOR CONFLUENCE

Confluence is one of the most popular platforms for knowledge management in companies. It's used to store business processes and track their changes over time, as a product catalog or a knowledge base for customers and partners, to collaborate on the development of products and services, and so much more.

Confluence has your back in any situation where you need to record and access information. Most companies who use Confluence are very conscious of maintaining a high level of data security. It makes sense to provide everyone with access to a diagramming tool like draw.io, where you can be sure that your company's diagram data will stay private

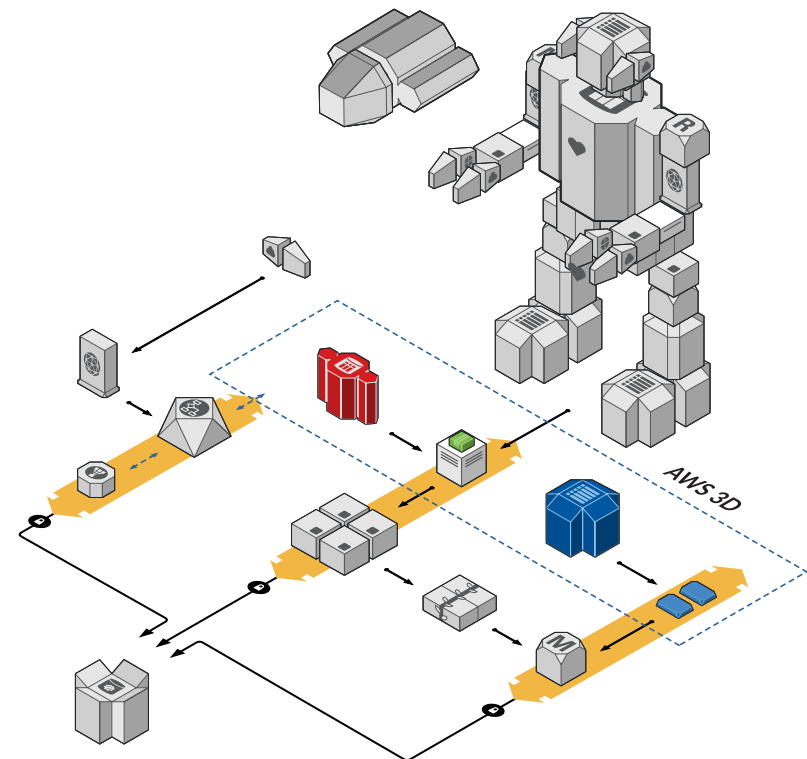
Thousands of apps on the Atlassian Marketplace can extend the solution into collaborative extranets, social intranets, content management environments, and even technical documentation systems with complex workflows. Diagramming is an essential component of documentation, and apps like draw.io help you to keep your diagrams together with their related Confluence pages.

- Record your business processes in flow charts and BPMN diagrams in Confluence pages. Confluence's revision history is perfect for when audits are required.
- Document your IT infrastructure and track changes made to it over time.
- Create organization charts to help your employees find the best contact person in their department or the company as a whole.



Going mobile? No problems!

Just as you can collaborate on Confluence pages via the browser on your mobile devices, you can also edit draw.io diagrams. Make sure you are using the browser on your device to access your instance though – the Confluence mobile app for iOS and Android doesn't yet support all macro functionality. But please don't try to create any complicated diagrams using your phone – you'll hurt your eyes!



DOCUMENT LIKE A PRO

DRAW.IO FOR JIRA

Atlassian's Jira is the world leader in issue and project tracking software and is used in small startups through to large enterprise organizations.

There are three Jira packages, and the draw.io app is available and useful for all three. This is fantastic for keeping your diagrams in context (and secure) when you collaborate on projects with external partners and customers via Jira.



Jira Software

Develop mockups directly in relevant Jira issues. Or **create UML diagrams** in issues for new features to reduce the number of errors in code or misunderstandings within larger teams.



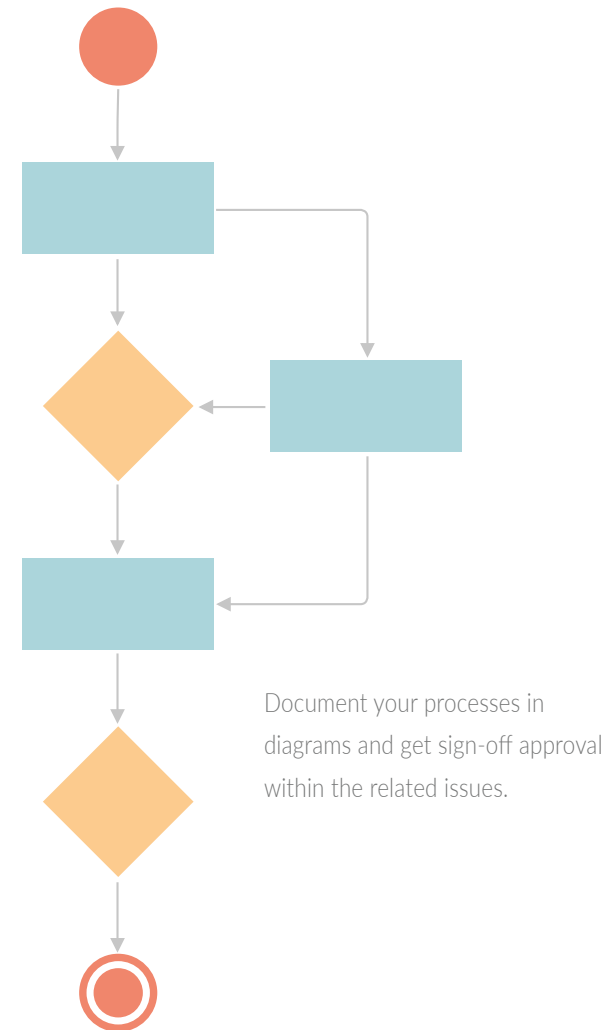
Jira Service Desk

Use a simple flow chart to document how to resolve an error or solve a complex customer problem within the relevant issue.



Jira Core

Create project flow charts, activity diagrams, and network diagrams directly in their related issues.

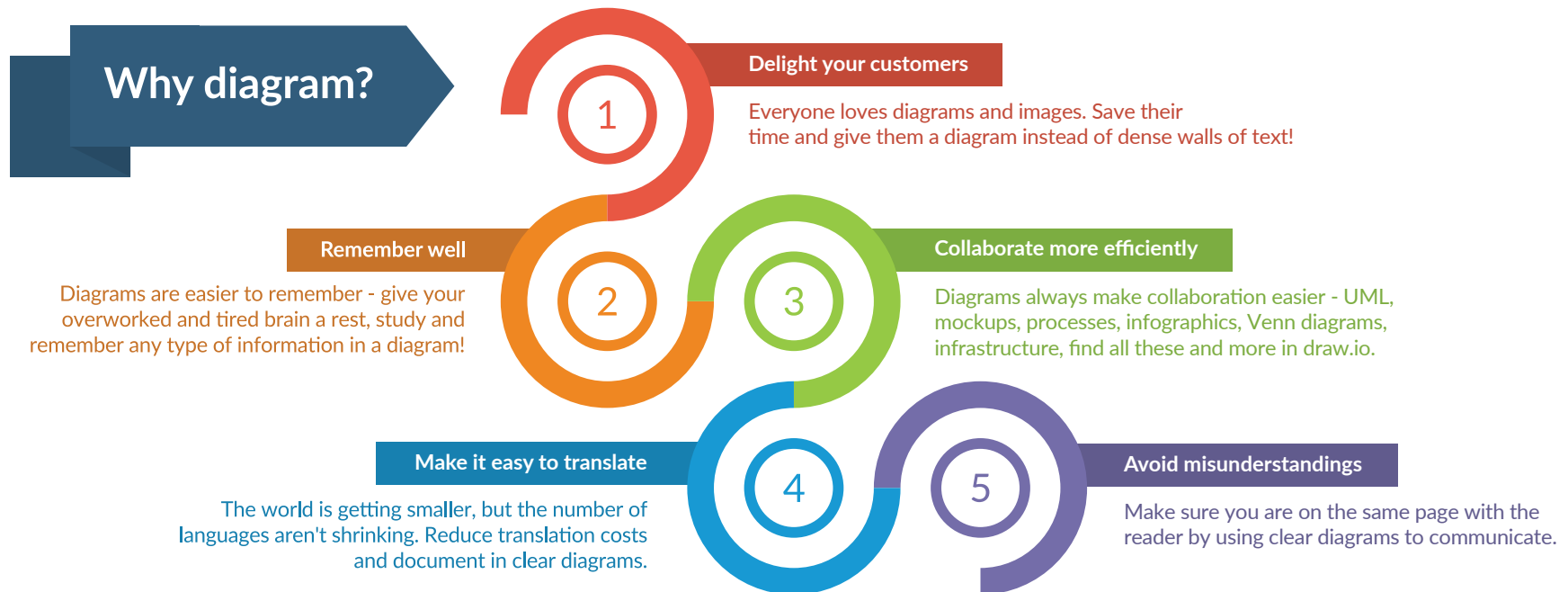


DRAW.IO IN TRELLO

Trello is a fantastic free tool, which is especially useful for tracking smaller projects – everything from your daily tasks to events. Many people even use it in their free time to organize projects such as moving house or planning a vacation!

Trello is not limited to traditional software development projects. You can add the [draw.io Power-Up](#) to Trello for free. Just as with draw.io for Confluence and Jira, your diagram data stays in your browser and on the Trello servers – private and secure.

- Add **infographics** directly to the respective Trello cards on your marketing team's board.
- Add a **floor plan** with measurements to your 'moving house' or 'renovation' board to make sure your furniture actually fits. Or use a floor plan to arrange the physical space for your next conference.
- Track **characters' relationships** or **plot threads** in cards on a Trello board for that novel that you are writing, or that D&D campaign you are DMing!



IT'S EASY TO SWITCH TO DRAW.IO

IMPROVE YOUR DATA SECURITY

It is no longer rare to switch software tools – when software development companies change ownership, their license and operating agreements are usually updated to reflect their new owner's focus.

Perhaps your company is not happy with the new terms, and wants to switch? Or maybe your external partners work with a tool you don't have access to? draw.io's open format makes it easy for other tools to support our format.

We also work hard to make sure you can import diagrams from other tools and export diagrams into many different formats. In addition to the import formats listed on the right, you can also enter SQL code to automatically visualize your tables, as well as PlantUML and Graphviz DOT code via menu functions to generate diagrams from the code automatically.

We've mentioned it before, and we'll mention it again – we are really proud of our reliable and handy Gliffy mass import tool, which allows you to convert all of your instance's Gliffy diagrams with just a few clicks. And if you need any help, you are welcome to contact us!

Import formats

- ✓ .xml
- ✓ .vsdx
- ✓ .vsd
- ✓ .vdx
- ✓ .gliffy
- ✓ .png (with embedded XML)
- ✓ .svg (with embedded XML)
- ✓ .jpeg
- ✓ .gif
- ✓ .vssx
- ✓ .json
- ✓ .csv

Export formats

- ✓ .xml
- ✓ .vsdx
- ✓ .pdf
- ✓ .html
- ✓ .png (with embedded XML)
- ✓ .svg (with embedded XML)
- ✓ .jpeg
- ✓ .url

SECURE DIAGRAMMING TOOLS

THE ONLY SENSIBLE CHOICE

Don't risk compromising on your data security and privacy.

Keep your diagram data where it belongs and under your control in your Confluence and Jira instances.

Using the draw.io apps will enable you to manage your data security risks effectively: You will minimize security breaches and avoid the hassle of trying to get time-consuming data processing agreements with third parties.

Plus, you will simplify your suite of tools for your employees and IT support staff.

Let everyone securely collaborate on diagrams with draw.io!

LET US HELP YOU

We love diagrams, and we want to make it as easy as possible for you to work with diagrams securely when using the Atlassian tools you require every day.

We are sure that you will love draw.io with its rich variety of shape libraries, templates for all kinds of diagrams, customizable user interface, and strong emphasis on security and data privacy.

Should you have a problem, a suggestion, or even if you want to let us know how much you love a certain feature, get in touch with us!

You can find self-guided training courses, tutorials, new-feature announcements, and events on our website at <https://about.draw.io>

Feel free to contact us at any time – we'd love to hear from you!



Support

Email: support@draw.io

Obligation-free test!

Browser: www.draw.io

In Confluence: seibert.biz/trydrawio