

Reducing a 3-month timeline to 30 days

Lucid's Cloud migration story

David Torgerson, VP of Infrastructure and IT, Lucid
Jake Sullivan, Managing Consultant, Oxalis





Agenda



Why move
to Cloud



Accelerate
the timeline



Effective
change
management



Further your
mission

Agenda



Why move
to Cloud



Accelerate
the timeline



Effective
change
management



Further your
mission

Adoption of Atlassian on-premise



 Jira Software

 Confluence

The need to move to Atlassian Cloud



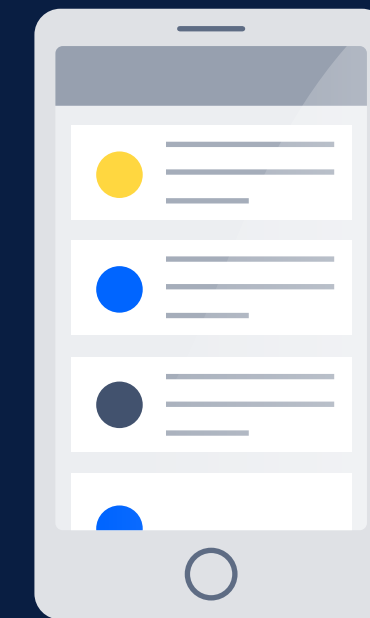
SaaS is industry standard

Server-based tools more expensive and difficult to maintain



Eat our own dogfood

Experience our own apps the way our customers do



Improve user experience

Improve remote user access and security

**WHAT WOULD IT
TAKE TO DO IT IN
2 WEEKS?**

Agenda



Why move
to Cloud



Accelerate
the timeline



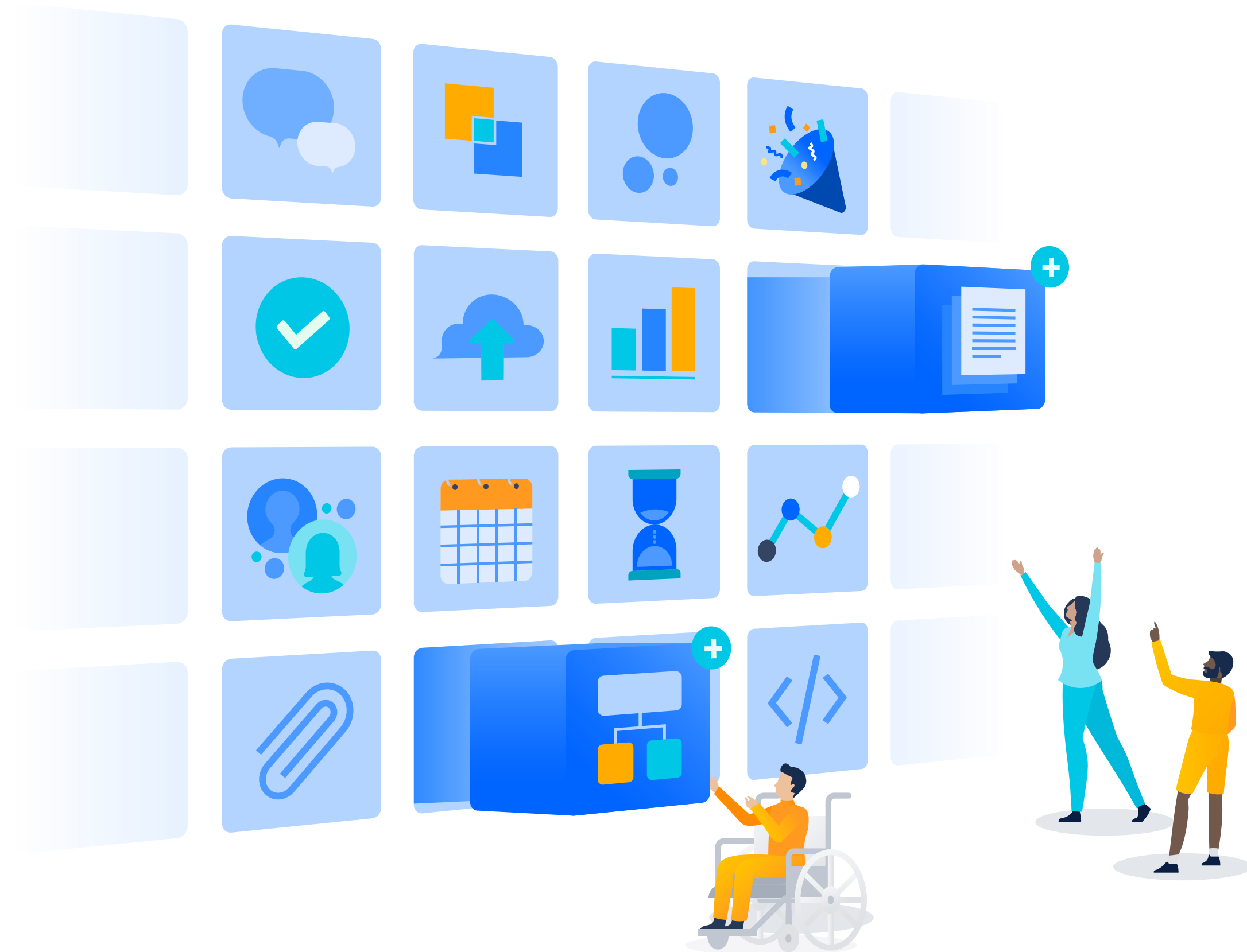
Effective
change
management



Further your
mission

3-6 MONTH TIMELINE

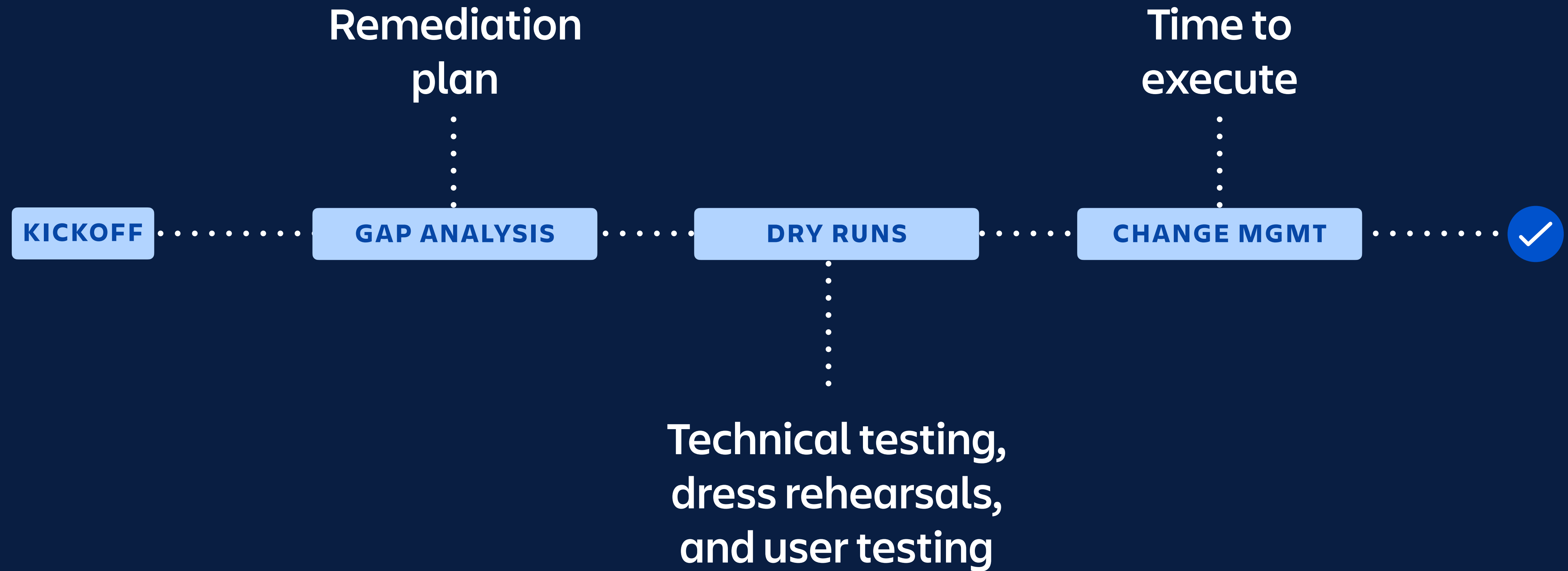




Getting on Cloud
was more
important than
on-premise parity.

**WHAT WOULD IT
TAKE TO DO IT IN
2 WEEKS?**

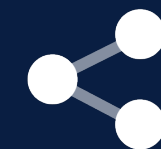
30-DAY TIMELINE



Focus on what matters



Identify unnecessary
plug-ins and tech debt



Leverage expert
resources



Test, test, test, and
test again



Cultivate stakeholder
buy-in

Agenda



Why move
to Cloud



Accelerate
the timeline



Effective
change
management



Further your
mission

Change Management

Create a vision

Identify advocates
& skeptics

Test and
communicate
early

Build internal excitement

Talk about new features and capabilities:

- Cloud-only product features
- Cloud apps
- Mobile apps and access without VPN

Convey what migration means

Don't just say, 'Now you're using Cloud.' How will the end employee's day-to-day change?

Change Management

Create a vision

Identify advocates
& skeptics

Test and
communicate
early

Go across the org

We enlisted about 20 testers from across the organization, so Engineering could see how the Cloud environment worked for various use cases.

Use champions to win over skeptics

Having a wide range of testers helped convey excitement, and the less frequent users and skeptics were great at pointing out technical deficiencies.

Change Management

Create a vision

Identify advocates
& skeptics

Test and
communicate
early

Plan your dress rehearsals

Oxalis has developed a methodology using migration dry runs paired with User Testing to help socialize the differences between Atlassian's on-prem and Cloud deployments.

Leverage expert and internal resources

Take the best resources from Atlassian, Solution Partners, and your company's internal documentation to clearly communicate what to expect ahead of time.



The migration
itself was
completed within
a weekend.

Agenda



Why move
to Cloud



Accelerate
the timeline



Effective
change
management



Further your
mission

Already seeing benefits of Atlassian Cloud



Elevated IT impact

Time spent on maintenance goes towards new initiatives



Stress-free weekends

Atlassian takes on security and patches vulnerabilities



Happy employees

New features and fewer interruptions

TIME SAVINGS

One SRE saved
25% of time in a
week after moving
to Atlassian Cloud



“

When I first heard we were moving to Atlassian Cloud, I was worried how it would impact my existing data and workflow. Now I can't even remember a time before we were on Cloud.”

EMMA REECE
SENIOR QUALITY ASSURANCE SPECIALIST

“

The Jira Software interface is better, and the experience is smoother. Advanced Roadmaps are a game-changer too. As priorities change, we can update our plans on the fly and better track if we're ready for releases.”

CHANCE RAMEY
PRODUCT MANAGER



Questions?