

**draw.io**



# The Great Migration

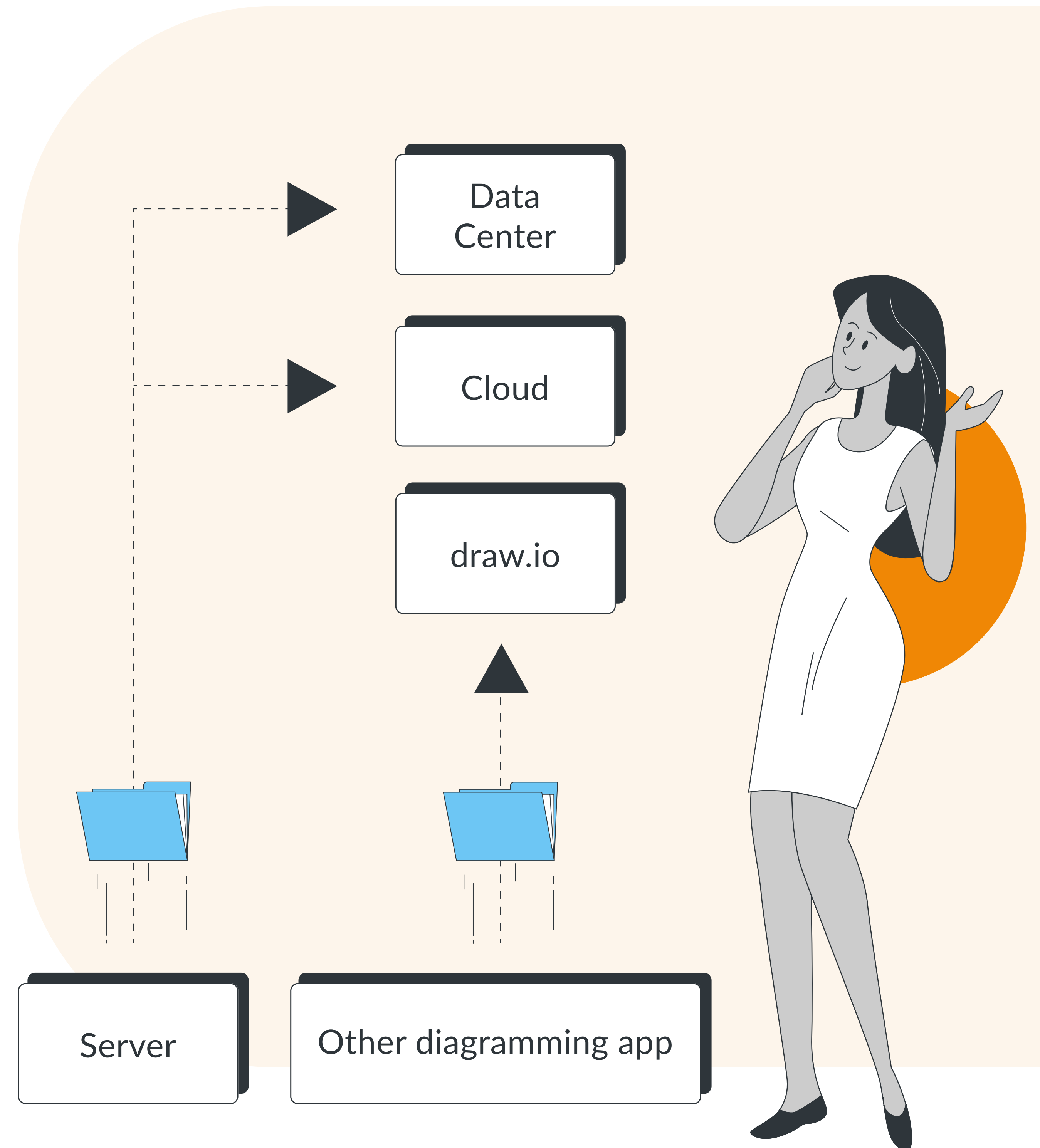
A condensed guide for changing deployments,  
or moving from old tools to draw.io

# The Great Migration

It's been three years since Atlassian sent ripples throughout the ecosystem, announcing that they would retire their self-managed server hosting options by 2024. Now, in 2023, with a looming one-year deadline to the end of support, the need to migrate has become urgent. Whether your path to Confluence migration is relatively simple or complex, figuring out how the many apps in your instance will transfer can be a daunting task. It can also be an opportunity. Migration is a natural time to assess your tool stack, considering which apps to take with you to the cloud or Data Center, which have fallen out of use, and which can be swapped out for a better solution.

## In this whitepaper we will explore:

- How to migrate draw.io data from one deployment to another (server to DC, or server to cloud)
- How to migrate Gliffy diagrams to draw.io
- Why you should move your existing visualization/diagramming solutions inside the Atlassian ecosystem

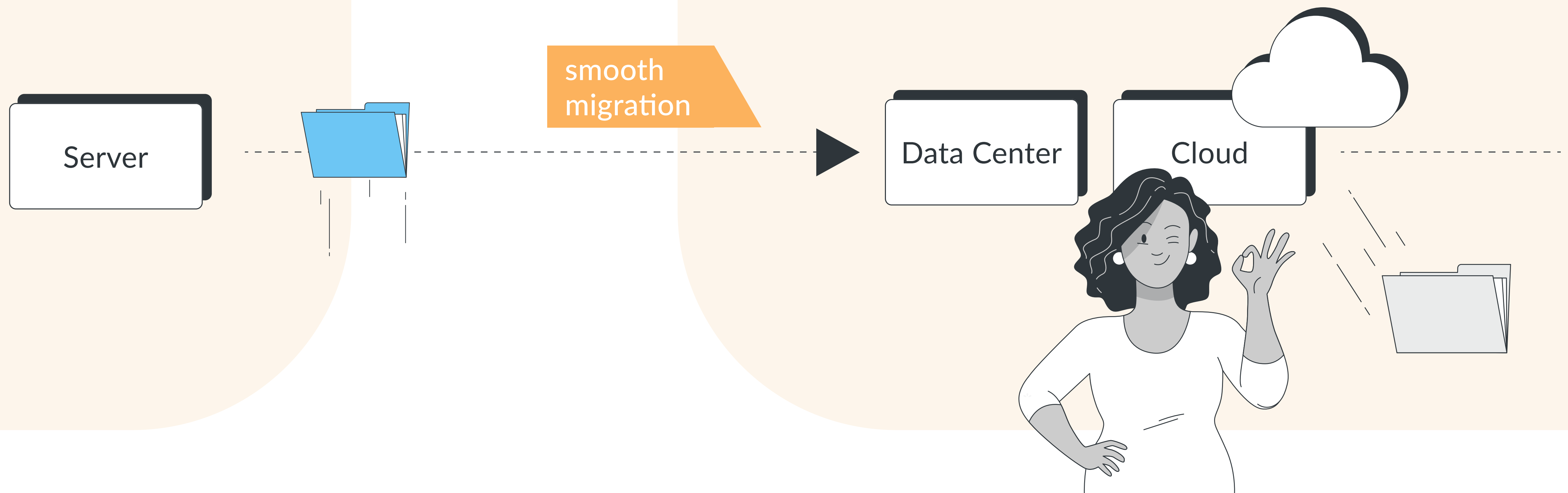


# Migrating draw.io diagrams from one Confluence deployment to another

How easy is it to migrate your diagrams to cloud or Data Center? Well, draw.io diagrams are stored as attachments on Confluence pages, which means that if you include page attachments when migrating Confluence, your diagrams automatically migrate as well. It is that simple. **All you have to do prior to migrating your Confluence instance to another deployment is follow two little steps:**

- Perform a re-index
- Export the Page IDs from your source instance, and then import the Page IDs in your target instance

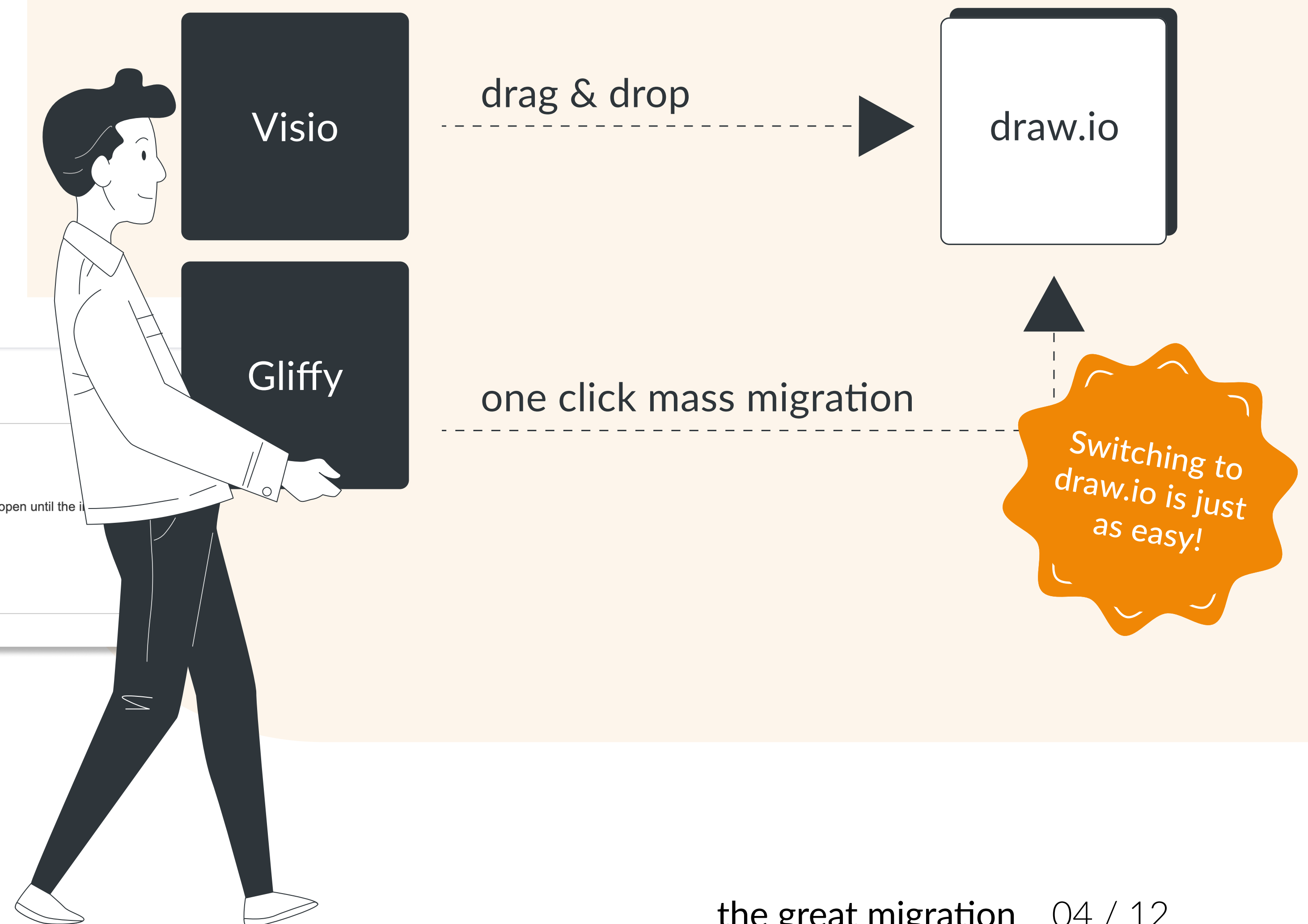
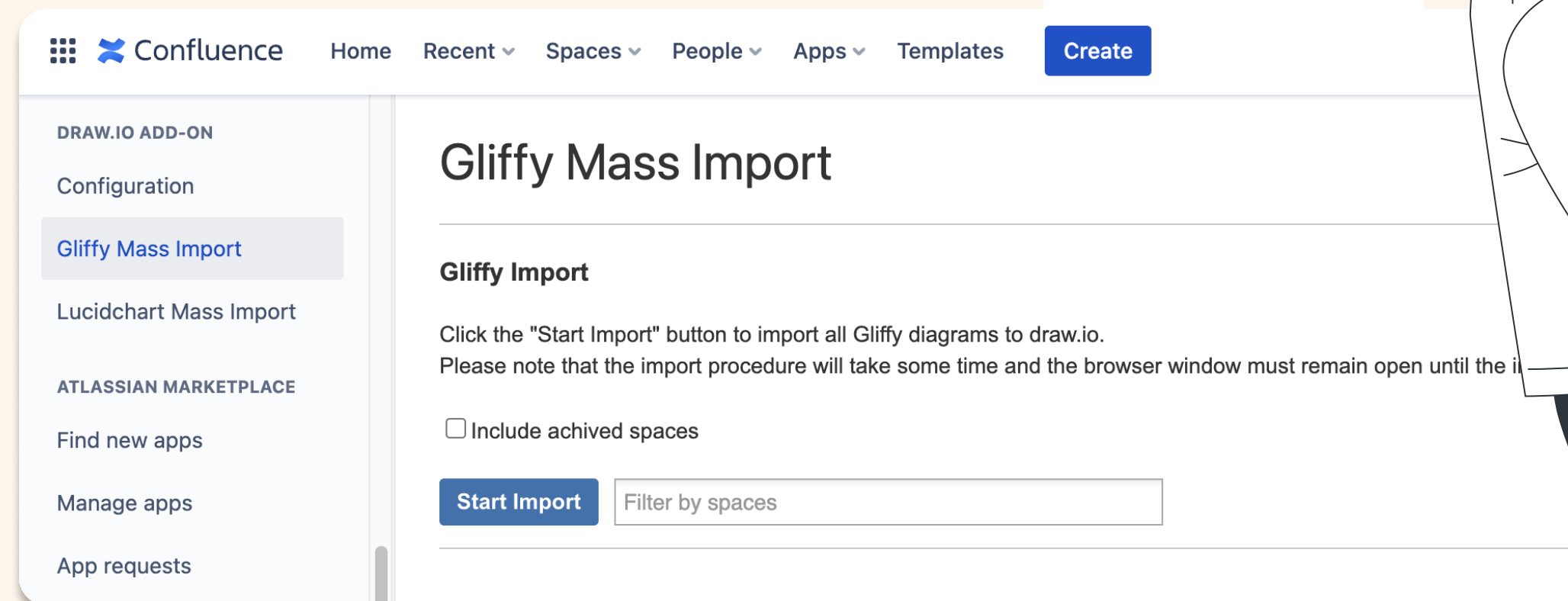
By performing the first step, you will ensure that Confluence has correctly indexed all page attachments in the source instance, and by matching Page IDs, the links in your diagrams will keep working as well. To view full documentation for the process, visit our [step by step guide](#). If you need guidance, contact our tech support team via [support@draw.io](mailto:support@draw.io).



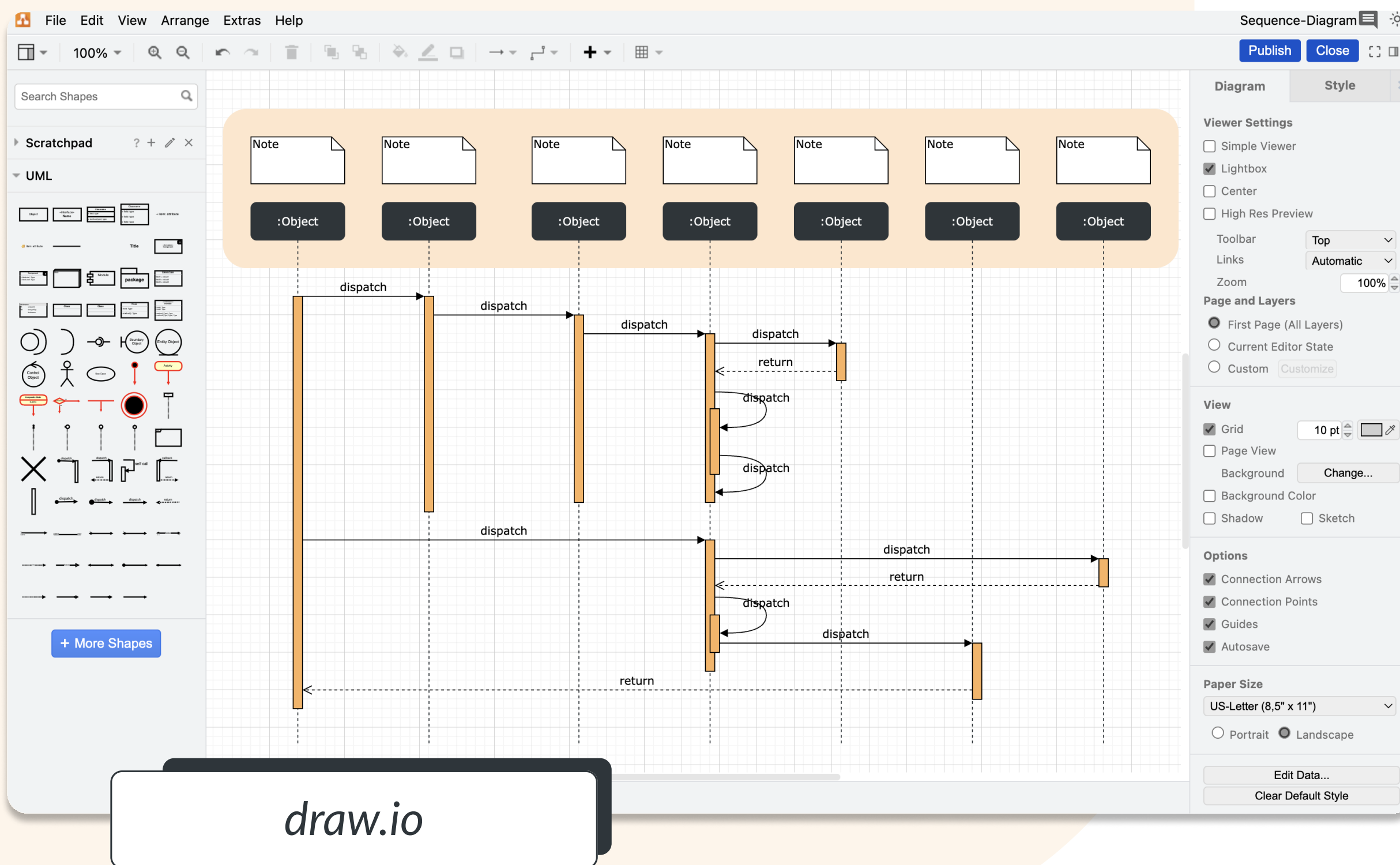
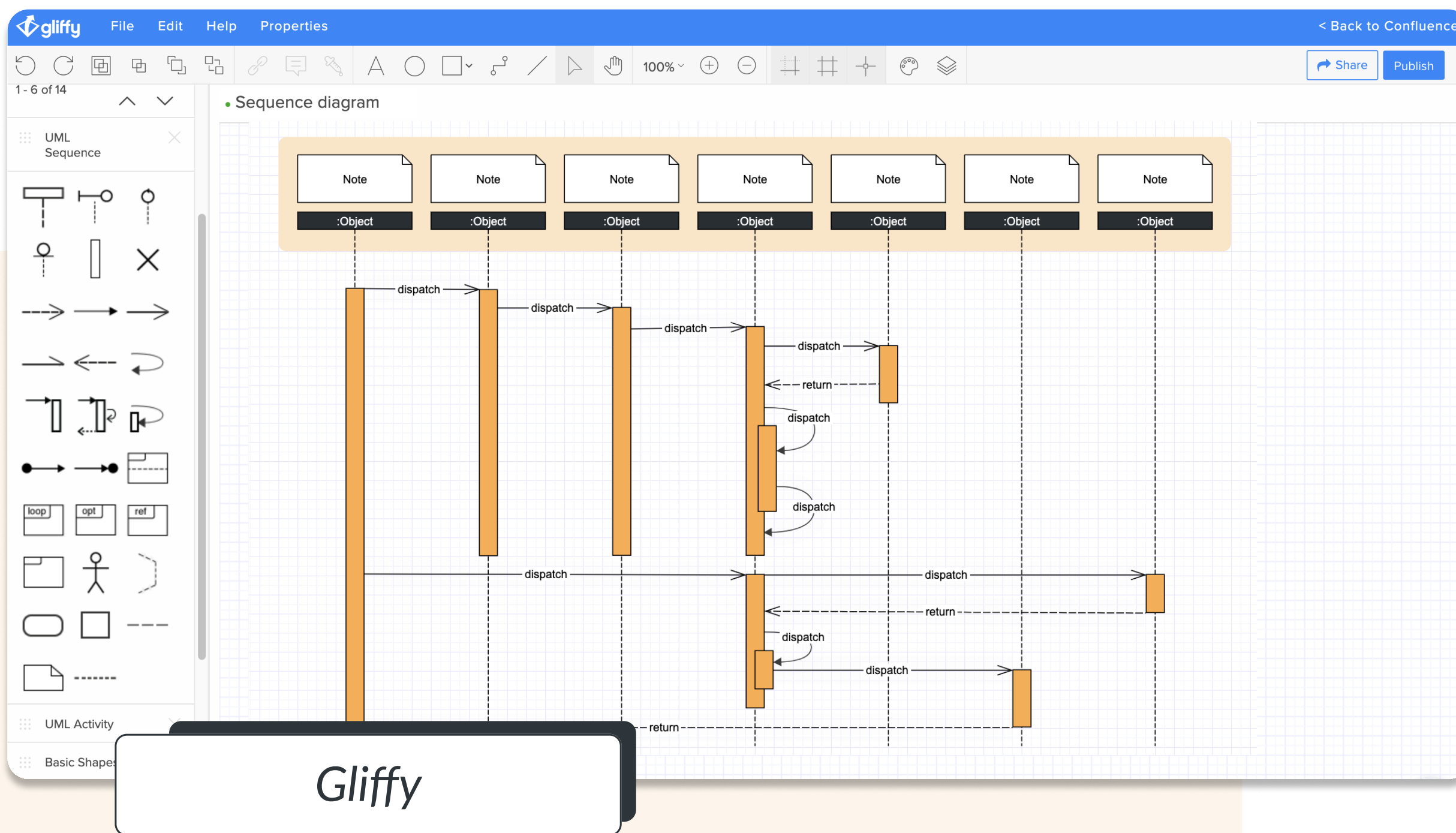
# Migrating from Gliffy to draw.io

Many of our customers use a migration to put their entire software package to the test. Which solutions have proven themselves, and which apps are rarely used? But even more important is the question "do we still have the best app for our needs, or are there better alternatives?"

Suppose you use Gliffy and are asking yourself precisely this question. In that case, we can assure you: migrating to draw.io will bring you more features, future-proof your setup, and deliver a much better return in terms of costs and benefits ([look at our comparison sheet for more information](#)).







But is the migration simple? Yes—after following these two quick steps, it's only the push of a button:

- Ensure that the latest version of both apps are installed, in both the source and target instances.
- Re-index Confluence so that all Gliffy diagrams can be found by the converter ([see Atlassian documentation](#)).

Have a look at the full documentation for migrating to draw.io in [our public Confluence instance](#).

But don't take our word for it, there are thousands of migrated customers who have never regretted trusting in draw.io:

*"We used Gliffy for 10+ years and as of January 2021 we decided to move to draw.io. We migrate[d] all our 6000+ Gliffy diagrams in our Confluence workspaces to draw.io and we are ready to go - very fast, smooth and transparent migration path. There is a number of reasons for this decision and we are happy that we are making this move. It's not just much more friendly pricing for large teams, but also excellent support, rich features, stability, and good performance, with large diagrams what we are going to benefit from in the years to come."*

– Peter Kobes –

## Switch to a visualization tool inside the Atlassian ecosystem

In recent years, the theme of the cloud shift has dominated conversations around software consolidation in many companies. Cloud services are typically more efficient, and more cost-effective. However, this also means that you have to deal with issues such as compliance, data security, and the consolidation of existing solutions. If you're reading this, you have chosen the Atlassian Ecosystem as your proprietary solution. So why not leverage as many services as possible within that ecosystem? **Here are five reasons why you should switch from your external diagramming app to draw.io:**

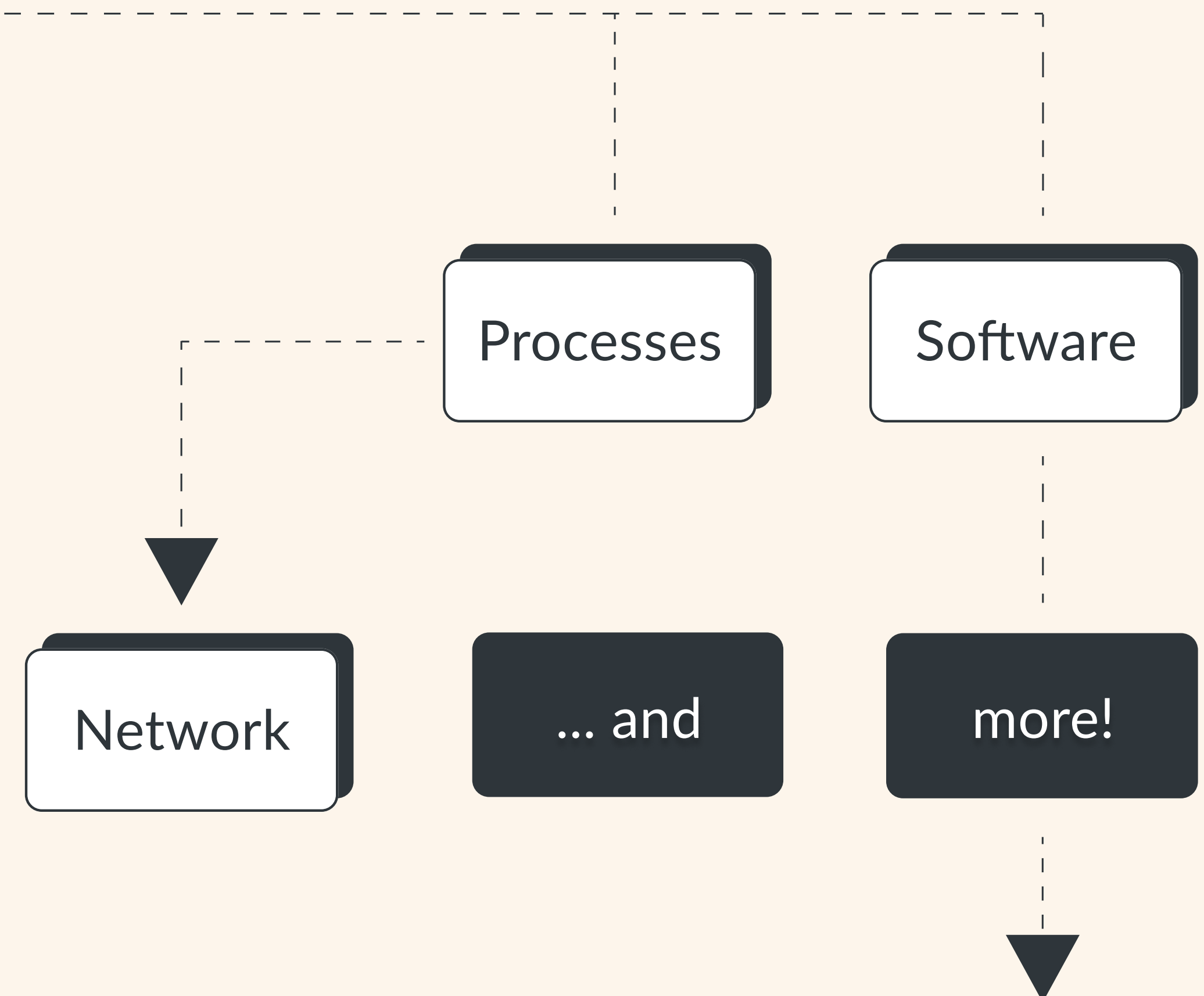
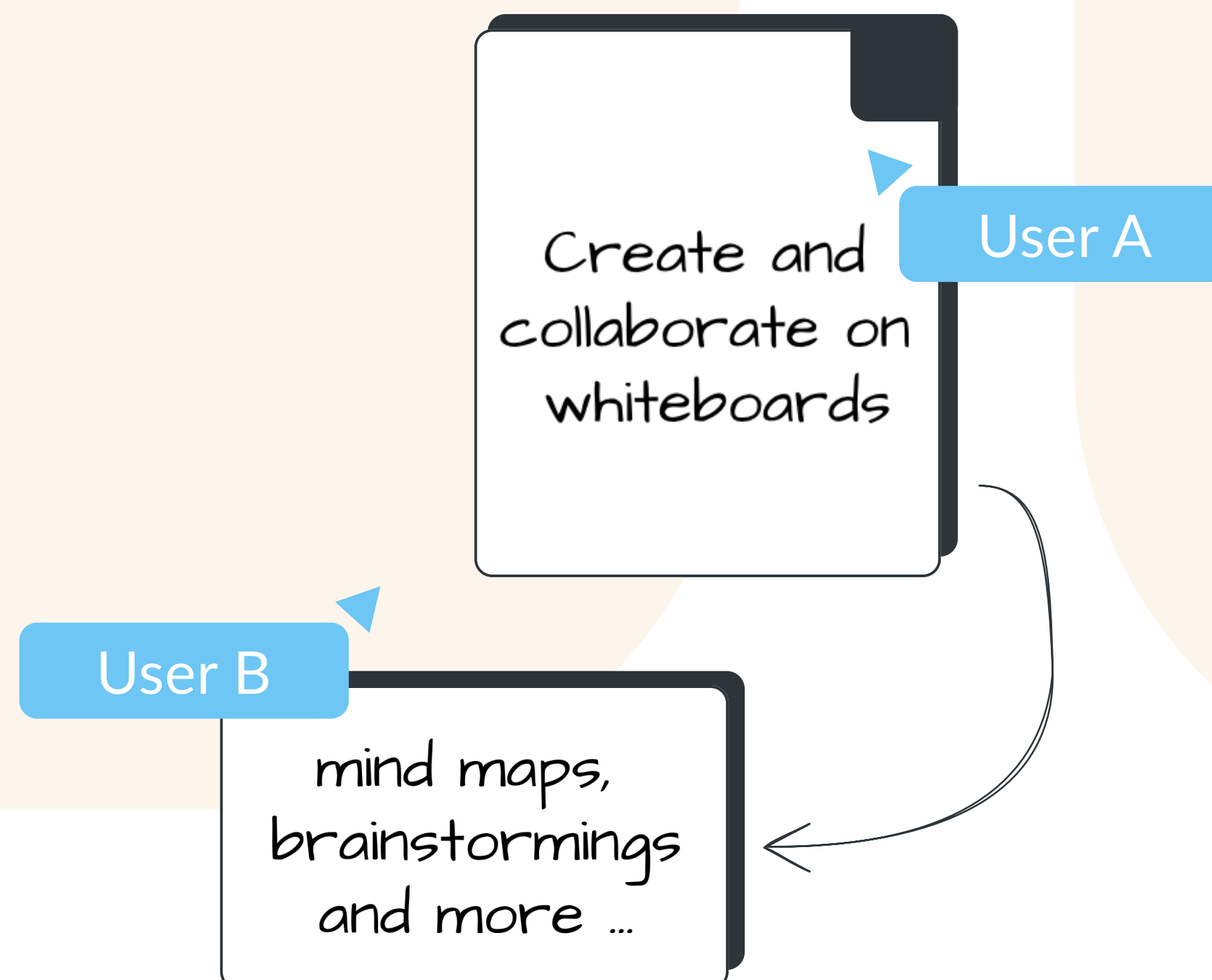
- Natively integrated toolset. Create and edit your ideas where you also create and share your concepts and knowledge, namely on the Confluence site itself. Say goodbye to the awkward embedded image.
- Best of both worlds approach. You can draw technical diagrams with draw.io as well as work out your ideas on whiteboards.
- Get the whole team on board. With draw.io, you enable ALL Confluence users to create diagrams and whiteboards collaboratively and in real-time (not just a few people).

- All your data is stored in Confluence and can be found there via the search function, and changes to documents can be tracked at any time via the revision history.
- draw.io goes beyond the strict Atlassian requirements and offers you both Data Residency and Data Governance (for more information, follow the link <https://drawio.link/datagovernance>).

Whatever solution you use for diagrams and whiteboarding, 2023 is the year to consider if a better tool is available, and we're confident draw.io is that better option.

# Your diagramming solution for Confluence

draw.io is the #1 rated and most installed diagramming app on the Atlassian Marketplace for Confluence and Jira. With draw.io, your team can collaborate in real-time on whiteboards and create powerful, easy to use and secure diagrams.



Whether you are making the big move from server to cloud/DC, or switching to draw.io from another diagramming app, draw.io offers clear documentation to make the migration process simple, and we are always ready to provide troubleshooting and support to your team. Reach out to us today to start your migration journey.



## Customer Success Story

# Rolling out Confluence and draw.io at Hilfswerk Salzburg

Hilfswerk Salzburg is a division of Hilfswerk Österreich, one of the largest providers of social services in Austria. To guarantee standardized and always up-to-date documentation of IT services and visual communication with external partners, they use Atlassian Confluence and draw.io.

## Revolutionizing project management with Confluence

Hilfswerk Österreich, a non-profit organization, employs over 11,000 people worldwide. Their largest areas of operation are nursing and care for the elderly, childcare and youth work, social work, and counseling and education. Hilfswerk is the market leader in the field of mobile care at home, while Hilfswerk International is active as an aid organization in crisis areas around the world.

With such important work on their shoulders, we were grateful to sit down with Adnan Reh, the head of Hilfswerk Salzburg's IT department, to talk about Confluence and draw.io.

"We are very happy to be able to use your plug-in in such a cost-efficient way," Adnan said of draw.io. The IT department is currently running a Confluence Data Center instance, and uses draw.io mainly for IT service management, creating workflow and network diagrams.





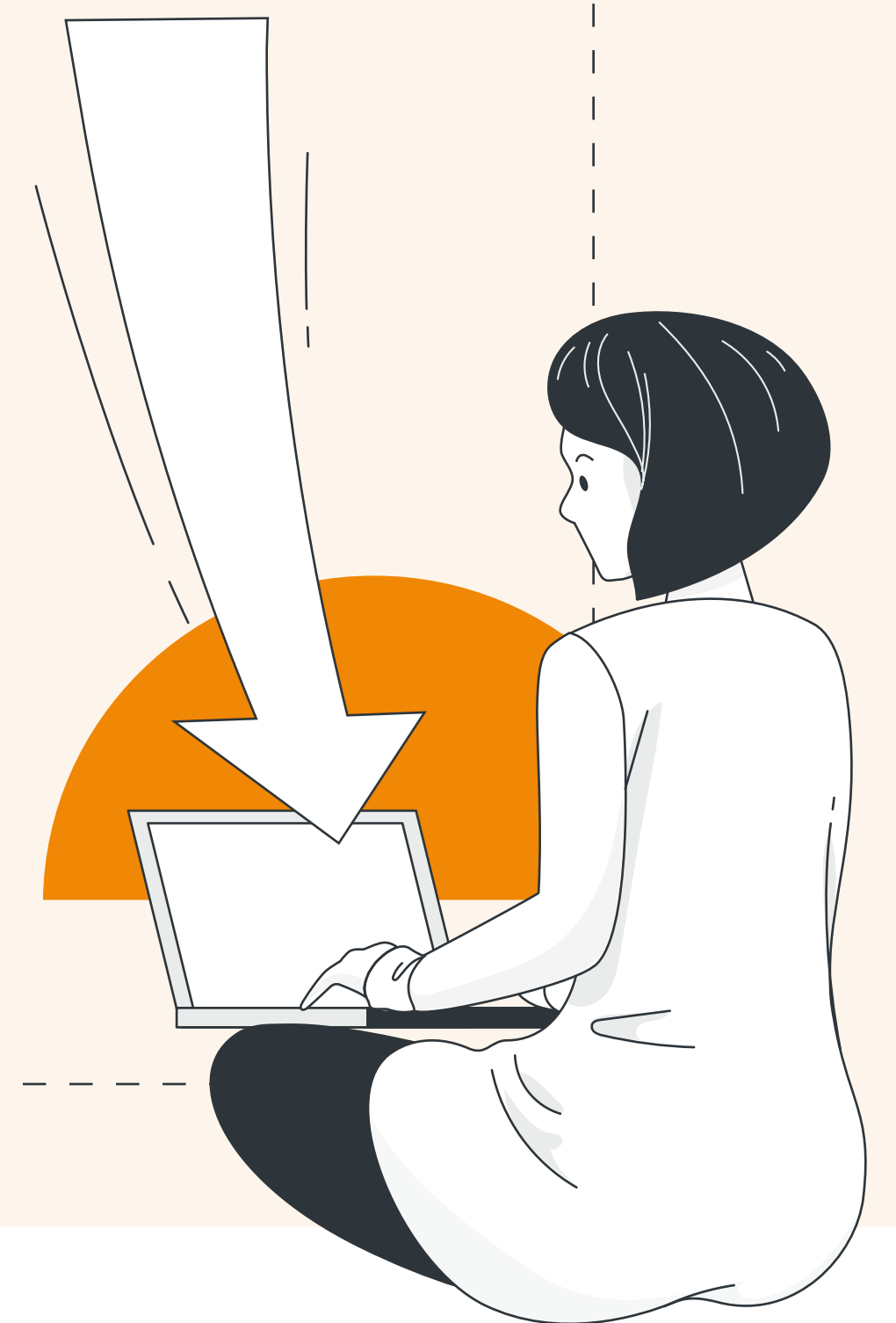
Adnan's plan is to extend Confluence to the entire organization, and revolutionize project management throughout the company using Jira and Confluence. This is a daunting task given the size of the organization – every province in Austria has its own Hilfswerk, and Hilfswerk Salzburg alone has more than 1,400 employees in almost 160 teams. Many of our readers will know what a challenge it can be to roll out Confluence in such a large organization: adopting Confluence for internal documentation, relying less on email, working with skeptical people who haven't used an internal wiki or intranet before, and so on!

But Adnan and Hilfswerk are up for the challenge. Hilfswerk's strategy is to provide its employees with the best possible tools for easy digital collaboration across teams. Adnan's department aims to make the digital workplace as efficient and intuitive as possible in order to ease the burden on employees.

## Adopting draw.io across teams

At the same time that Adnan will be rolling out Confluence to the rest of the organization, he also plans to extend draw.io to other departments. So far, because other teams do not yet have Confluence, and thus draw.io, diagrams are only created within the IT department and exported for viewing by other teams, for example in management presentations that show IT roadmaps.

Once Confluence is fully rolled out, Adnan can well imagine collaborating with other teams on draw.io diagrams – from diagrams for the customer portal to org charts for the HR department. The application is so diverse that it won't be hard to find a helpful place for draw.io in every team.



## From Visio to draw.io

Today most departments of Hilfswerk Salzburg use Visio for their diagrams, since the teams are currently using Microsoft Office. The plan is to migrate the Visio diagrams into draw.io as the organization switches over to Confluence.

Migrating Visio diagrams to draw.io is an intuitive and technically simple process, so the IT department shouldn't have any problems. But just in case they do need help, our team at draw.io is always ready to offer support!

Migrating  
to draw.io is  
so easy!



## Exploring draw.io features

As part of our conversation, we asked Adnan if there were any features his team had found missing from draw.io.

“No, nothing is missing,” Adnan said, “maybe some IT icons and the app for Android and iOS.” Luckily, [the integration of custom libraries into draw.io](#) is so easy that we were able to quickly show Adnan how to import them himself with just a few clicks. We also explored draw.io’s whiteboard feature, which further enhances the kind of collaborative work done at Hilfswerk.

Finally, we talked about some other apps from Seibert Media that Hilfswerk Salzburg might also be interested in, including social intranet app [Linchpin](#), [Aura](#) and [Blueprint Creator](#). And as a true IT guy and Jira user, Adnan was also interested in the documentation for [Agile Hive](#).

**“I am grateful for this brilliant software,” Adnan said of draw.io. “Thank you so much for letting us use it!”**

Of course, we would like to thank Adnan even more for the interview, and the whole Hilfswerk Salzburg team for the trust they have put in our tool. It’s a pleasure to help an organization that puts helping others as its number one goal.

We wish you good luck in rolling out Confluence and have fun diagramming with draw.io, Adnan!



## What our customers say

*"I have a lot of customers that use this app and also within my own company. It's easy to install and use. It also comes with a migration tool to migrate all Gliffy diagrams to draw.io that is just golden. I had some problems with the migration, but the support at draw.io was so helpful, and had a lot of patience with all my messages. They even helped me fix the Gliffy files that were too big so I could easily export them to draw.io."*

– Maja Vallin –

*"Flowcharts, maps, quick mock-ups – draw.io can do it all. I love it. Thank you draw.io team for providing such a tool."*

– Vishnu Anilkumar –

*"Seriously! I do not write reviews very often, but after struggling with all other flowchart apps and desktop programs (paid ones), I finally found something that is really good. Hats off to the makers of this one. If you read this - do not even bother with other stuff out there. This is the best one."*

– Mikael Svensson –

## Get in touch with us!

Visit us on our platforms or book a free demo:

<https://linktr.ee/draw.io>

Support: [support@draw.io](mailto:support@draw.io)

Obligation-free test!

[seibert.biz/trydrawio](https://seibert.biz/trydrawio)

Get your  
free personal  
draw.io demo  
today!